

Terrible things breed in broken hearts.

Medea is a wife and a mother. For the sake of her husband, Jason, she's left her home and borne two sons in exile. But when he abandons his family for a new life, Medea faces banishment and separation from her children. Cornered, she begs for one day's grace.

It's time enough. She exacts an appalling revenge and destroys everything she holds dear.

**Running Time: 1hr 30mins, with no interval**

## CAST

Nurse  
Medea  
Aegeus, *King of Athens*  
Jason  
Kreusa  
Kreon, *King of Corinth*  
Jason's attendant  
Medea's two sons  
Chorus

**MICHAELA COEL**  
**HELEN McCrORY**  
**DOMINIC ROWAN**  
**DANNY SAPANI**  
**CLEMMIE SVEAAS**  
**MARTIN TURNER**  
**TOBY WHARTON**  
**JOEL McDERMOTT** and **JUDE PEARCE**  
**LORNA BROWN**  
**VIVIEN CARTER**  
**AMY GRIFFITHS**  
**HAZEL HOLDER**  
**JANE LEANEY**  
**CAROLINE MARTIN**  
**DAISY MAYWOOD**  
**YUYU RAU**  
**PETRA SÖÖR**  
**CLEMMIE SVEAAS**  
**NAOMI TADEVOSSIAN**  
**CATH WHITEFIELD**  
**JANE WYMARK**  
**SIMON DESBOROUGH**  
**ADRIAN GROVE**  
**IAN WATSON** (MD/accordion/keyboards),  
**JOBY BURGESS** (percussion),  
**SARAH CRISP** (violin/viola),  
**LLINOS RICHARDS** (cello),  
**KATIE WILKINSON** (viola)

Ensemble

Musicians

## CREATIVE TEAM

Director  
Designer  
Lighting Designer  
Choreographer  
Music  
Sound Designer  
Fight Director  
Company Voice Work  
Staff Director  
Production Manager  
Casting  
Stage Manager  
Deputy Stage Manager  
Assistant Stage Managers  
Deputy Production Manager  
Project Draughting  
Digital Art  
Costume Supervisor  
Wigs, Hair & Make-up Supervisor  
Prop Supervisor

**CARRIE CRACKNELL**  
**TOM SCUTT**  
**LUCY CARTER**  
**LUCY GUERIN**  
**WILL GREGORY & ALISON GOLDFRAPP**  
**GREGORY CLARKE**  
**OWAIN GWYNN**  
**JEANNETTE NELSON & DANIELE LYDON**  
**NED BENNETT**  
**MARTIN BARRON**  
**WENDY SPON, CHARLOTTE SUTTON**  
**ALISON RANKIN**  
**BEN DONOGHUE**  
**GARETH NEWCOMBE, LAURA SULLY**  
**GARY PELL**  
**ALAN BAIN**  
**EMMA PILE**  
**REBECCA ELSON**  
**SARAH-LOU PACKHAM**  
**ELEANOR SMITH**

Please make sure all phones are switched off during the performance

## Medea and Euripides

Euripides, believed to have lived between 480–406 BCE, was a Greek tragedian who is thought to have written over 90 plays during his lifetime. Around a fifth of these plays have survived to the present day in a relatively complete state, including *Medea*, *Electra*, *The Trojan Women* and *The Bacchae*. Many of his other plays have survived in fragments, with the remainder thought lost.

*Medea* is based on the myth of Jason, who sought the Golden Fleece, and Medea, Jason's wife and the grand-daughter of the Sun god Helios.

The play is thought to have been first staged in Athens in 431 BCE when it would have been performed in ancient Greek in which it was originally written. This is the National Theatre's first production of *Medea*.

You can find out more about Greek drama at the National Theatre in our Google Cultural Institute Exhibition at [ntlive.com/greekdrama](http://ntlive.com/greekdrama)

## Coming up



Photo by Julian Pearson

### A Streetcar Named Desire

by Tennessee Williams

**Broadcast live from the Young Vic  
on 16 September**

★★★★★

'Electrifying. Gillian Anderson is unmissable'  
Evening Standard

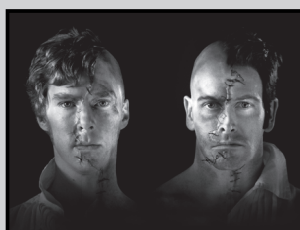


Photo: Benedict Cumberbatch and Jonny Lee Miller by Clare Nicholson

### Frankenstein

by Nick Dear  
based on the novel by Mary Shelley

**Returns to cinemas from 30 October**

Encore screenings of Danny Boyle's smash-hit production, with Benedict Cumberbatch and Jonny Lee Miller alternating roles as Victor Frankenstein and his Creature.

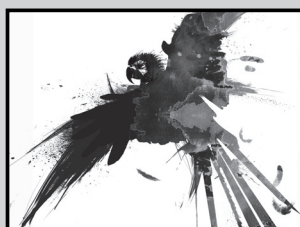


### JOHN

a co-production with DV8 Physical Theatre  
a work conceived and directed by Lloyd Newson

**Broadcast live on 9 December**

*JOHN* depicts real-life stories and combines movement and spoken word to create an intense, moving theatrical experience. Suitable for 18yrs+.



### Treasure Island

by Robert Louis Stevenson  
in a version by Bryony Lavery

**Broadcast live on 22 January 2015**  
Half term encore screening on 18 February

The classic story of murder, money and mutiny is brought to life in a thrilling new stage adaptation. Suitable for 10yrs+.



[ntlive.com/signup](http://ntlive.com/signup)



[facebook.com/ntlive](https://facebook.com/ntlive)



@ntlive #Medea

Please turn over for more details of these upcoming broadcasts  
**ntlive.com**

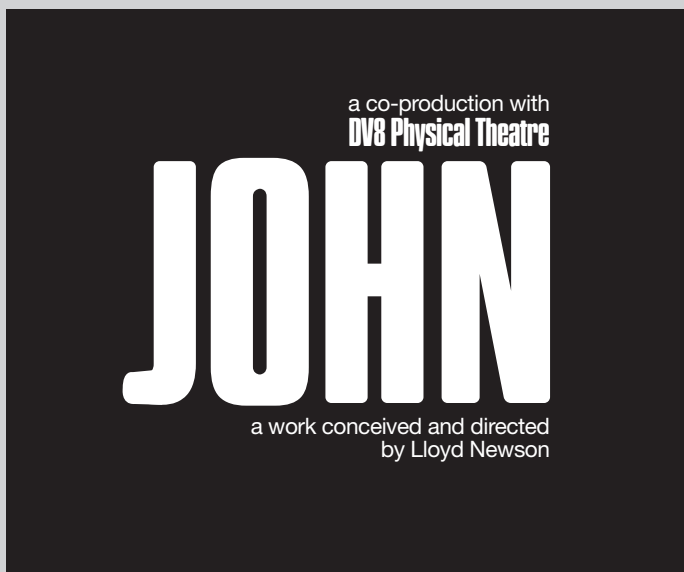
## Upcoming broadcasts



### Broadcast live on 16 September

The fastest-selling production in the Young Vic's history, Tennessee Williams' timeless masterpiece *A Streetcar Named Desire* will be broadcast live from their London home. With Gillian Anderson (*The X-Files*, *The Fall*) as Blanche DuBois, Ben Foster (*Lone Survivor*, *Kill Your Darlings*) as Stanley and Vanessa Kirby (BBC's *Great Expectations*, *Three Sisters* at the Young Vic) as Stella.

As Blanche's fragile world crumbles, she turns to her sister Stella for solace – but her downward spiral brings her face to face with the brutal, unforgiving Stanley Kowalski. Visionary director Benedict Andrews returns to the Young Vic following his Critics' Circle Award-winning *Three Sisters*.



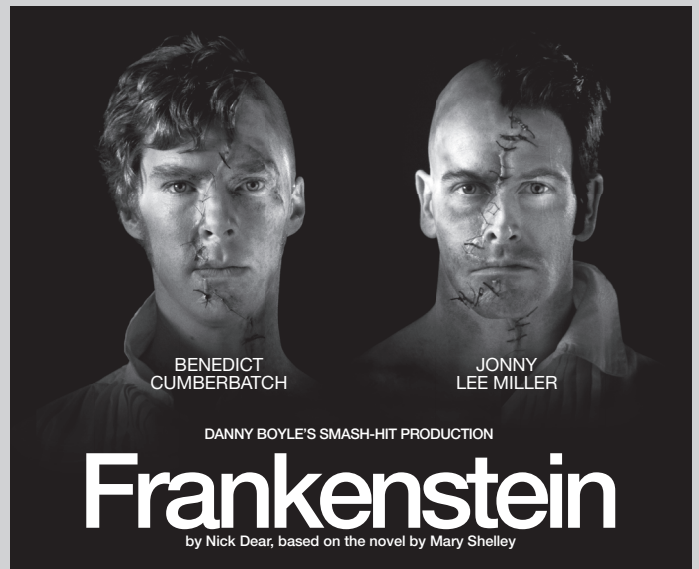
### Broadcast live on 9 December

*JOHN* contains adult themes, strong language and nudity. Suitable for 18yrs+.

Internationally renowned DV8 Physical Theatre's new production, *JOHN*, authentically depicts real-life stories, combining movement and spoken word to create an intense and moving theatrical experience.

Lloyd Newson, DV8's Artistic Director, interviewed more than 50 men asking them frank questions, initially about love and sex. One of those men was John.

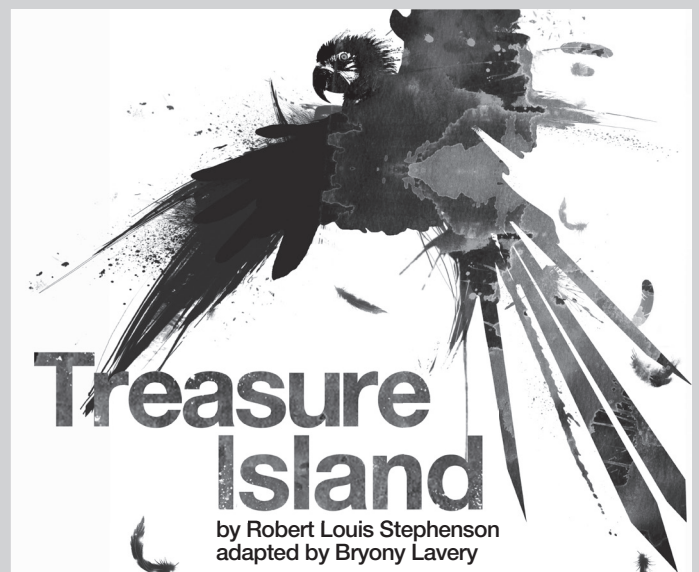
What emerged was a story that is both extraordinary and touching. Years of crime, drug use and struggling to survive lead John on a search in which his life converges with others, in an unexpected place, unknown by most.



### Returns to cinemas from 30 October

Danny Boyle's smash-hit production, with Olivier Award-winners Benedict Cumberbatch and Jonny Lee Miller alternating roles as Victor Frankenstein and his Creature, returns to cinemas for a limited time following unprecedented audience demand.

Childlike in his innocence but grotesque in form, Frankenstein's bewildered creature is cast out into a hostile universe by his horror-struck maker. Meeting with cruelty wherever he goes, the friendless Creature, increasingly desperate and vengeful, determines to track down his creator and strike a terrifying deal.



### Broadcast live on 22 January 2015

Half term encore 18 February

Robert Louis Stevenson's story of murder, money and mutiny is brought to life in a thrilling new stage adaptation.

It's a dark, stormy night. The stars are out. Jim, the inn-keeper's granddaughter, opens the door to a terrifying stranger. At the old sailor's feet sits a huge sea-chest, full of secrets. Jim invites him in – and her dangerous voyage begins.

Suitable for 10yrs+.