

# Young Vic

## A STREETCAR NAMED DESIRE

by TENNESSEE WILLIAMS  
direction BENEDICT ANDREWS  
A Young Vic / Joshua Andrews co-production



**National  
Theatre  
Live**

As Blanche's fragile world crumbles, she turns to her sister Stella for solace – but her downward spiral brings her face to face with the brutal, unforgiving Stanley Kowalski.

**Running Time: 3hrs 45mins, with a 20min interval**

Blanche DuBois  
Eunice Hubbel  
Mexican Woman  
Steve  
Young Collector  
Stanley Kowalski  
Doctor  
Pablo  
Nurse  
Harold Mitchell (Mitch)  
Stella Kowalski  
Woman

Direction  
Design  
Costumes  
Light  
Sound  
Music  
Dialect  
Voice  
Fight  
Jerwood Assistant Director

Company Stage Manager  
Stage Manager  
Deputy Stage Manager  
Assistant Stage Manager  
Costume Supervisor  
Lighting Operators

Sound Operator  
Revolve Operator  
Dresser and Wardrobe  
Maintenance  
Wardrobe Maintenance

Piano  
Saxophone  
Trumpet  
Upright Bass  
Clarinet

**GILLIAN ANDERSON  
CLARE BURT  
LACHELE CARL  
BRANWELL DONAGHEY  
OTTO FARRANT  
BEN FOSTER  
NICHOLAS GECKS  
TROY GLASGOW  
STEPHANIE JACOB  
COREY JOHNSON  
VANESSA KIRBY  
CLAIRE PREMPEH**

**BENEDICT ANDREWS  
MAGDA WILLI  
VICTORIA BEHR  
JON CLARK  
PAUL ARDITTI  
ALEX BARANOWSKI  
RICK LIPTON  
RICHARD RYDER  
BRET YOUNT  
NATASHA NIXON**

**ALEX CONSTANTIN  
LAURA FLOWERS  
FRANCESCA FINNEY  
SOPHIE RUBENSTEIN  
NATASHA WARD  
CORINNE FISH  
NICOLE SMITH  
AMY BRAMMA  
NELL ALLEN  
ALICE FITZGERALD**

**NAIMO DUALE**

**ALEX BARANOWSKI  
RUBEN FOX  
MARK KAVUMA  
JASON SIMPSON  
GIACOMO SMITH**

Set built by Weld-Fab Stage Engineering

Showline LED Battens supplied by Martin Palmer at Philips Entertainment  
Cake made by Konditor & Cook

The Young Vic dedicates this production to the memory of Fizz Jones

Natasha Nixon is supported through the Jerwood Assistant Directors Programme at the Young Vic

*A Streetcar Named Desire* is generously supported by Bruno Wang and an anonymous donor

*A Streetcar Named Desire* is presented by special arrangement with The University of the South, Sewanee, Tennessee

### About the Young Vic

We produce classics, new plays, forgotten works, musicals and opera. Our seasons of shows, directed by some of the world's leading directors alongside the brightest of the next generation, make us one of the UK's most innovative theatre companies. We produce 12 shows a year in our three theatres and tour widely. With deep roots in our neighbourhood, we co-produce with leading theatres all over the world.

Recent productions include: *A View from the Bridge* directed by Ivo van Hove, *Kander and Ebb's The Scottsboro Boys* directed by Susan Stroman, *A Doll's House* directed by Carrie Cracknell, *A Season in the Congo* directed by Joe Wright and *The Valley of Astonishment* directed by Peter Brook.

Artistic Director

**DAVID LAN**

Executive Director

**LUCY WOOLLATT**

**'The best theatre in London' Daily Telegraph**

It's a big world in here [youngvic.org](http://youngvic.org)

/youngvictheatre

@youngvictheatre

### Upcoming NT Live broadcasts

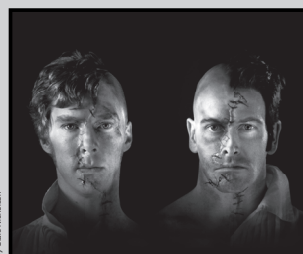


Photo: Benedict Cumberbatch and Jonny Lee Miller by Claire Nicholson

#### Frankenstein

by Nick Dear  
based on the novel by Mary Shelley

**Returns to cinemas from 30 October**

Encore screenings of Danny Boyle's smash-hit production, with Benedict Cumberbatch and Jonny Lee Miller alternating roles as Victor Frankenstein and his Creature.



#### JOHN

a co-production with DV8 Physical Theatre  
a work conceived and directed by Lloyd Newson

**Broadcast live on 9 December**

*JOHN* depicts real-life stories and combines movement and spoken word to create an intense, moving theatrical experience. Suitable for 18yrs+.



#### Treasure Island

by Robert Louis Stevenson  
in a version by Bryony Lavery

**Broadcast live on 22 January 2015**

Half term encore screening on 18 February

The classic story of murder, money and mutiny is brought to life in a thrilling new stage adaptation. Suitable for 10yrs+.

Please turn over for more details of these upcoming broadcasts  
[ntlive.com](http://ntlive.com)



[ntlive.com/signup](http://ntlive.com/signup)



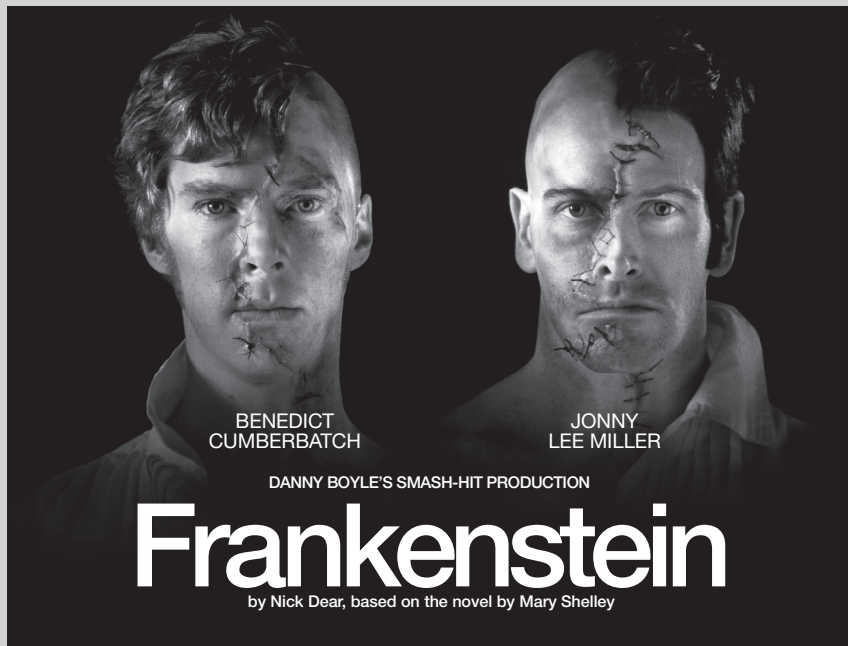
[facebook.com/ntlive](https://facebook.com/ntlive)



@ntlive #YVStreetcar

Please make sure all phones are switched off during the performance

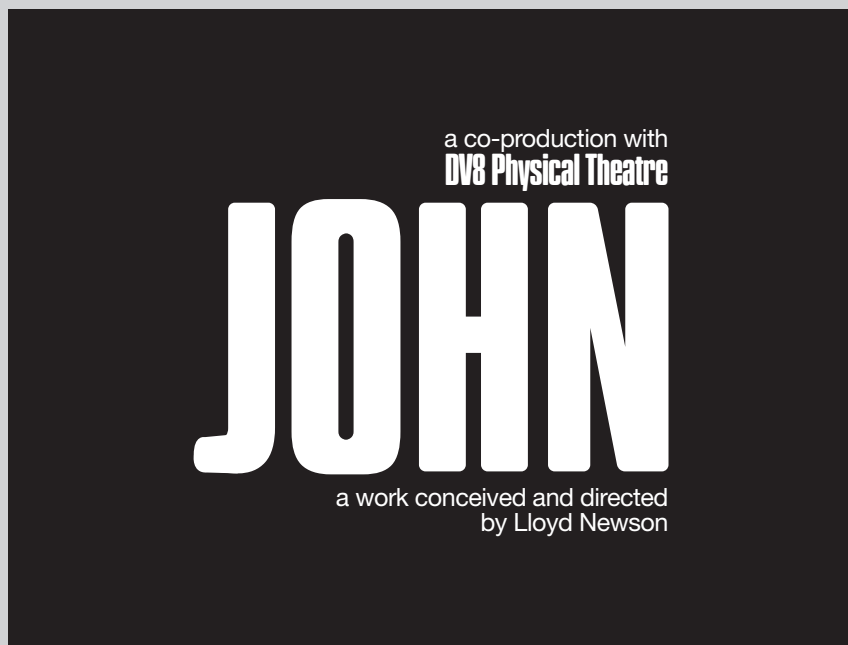
## Upcoming broadcasts



### Returns to cinemas from 30 October

Danny Boyle's smash-hit production, with Olivier Award-winners Benedict Cumberbatch and Jonny Lee Miller alternating roles as Victor Frankenstein and his Creature, returns to cinemas for a limited time following unprecedented audience demand.

Childlike in his innocence but grotesque in form, Frankenstein's bewildered creature is cast out into a hostile universe by his horror-struck maker. Meeting with cruelty wherever he goes, the friendless Creature, increasingly desperate and vengeful, determines to track down his creator and strike a terrifying deal.



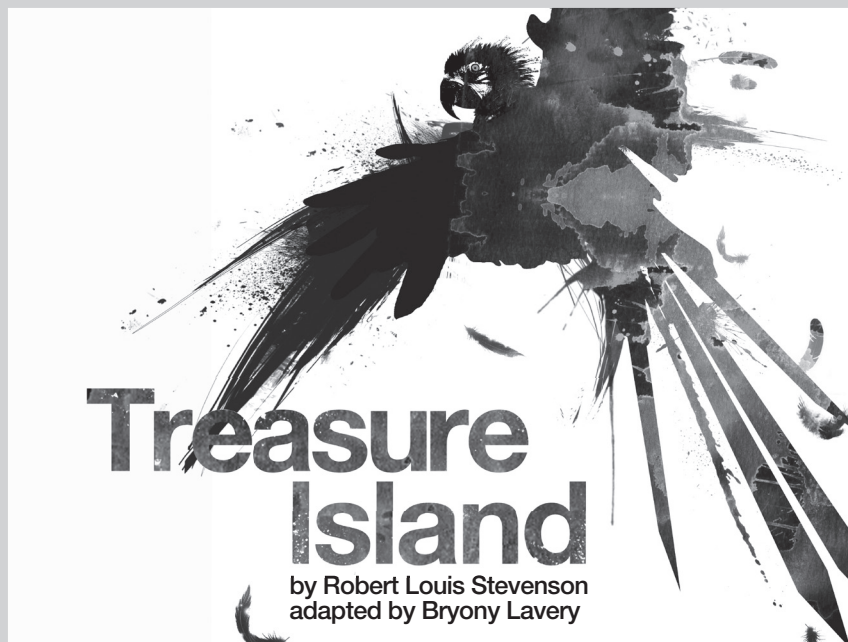
### Broadcast live on 9 December

*JOHN* contains adult themes, strong language and nudity. Suitable for 18yrs+.

Internationally renowned DV8 Physical Theatre's new production, *JOHN*, authentically depicts real-life stories, combining movement and spoken word to create an intense and moving theatrical experience.

Lloyd Newson, DV8's Artistic Director, interviewed more than 50 men asking them frank questions, initially about love and sex. One of those men was John.

What emerged was a story that is both extraordinary and touching. Years of crime, drug use and struggling to survive lead John on a search in which his life converges with others, in an unexpected place, unknown by most.



### Broadcast live on 22 January 2015

Half term encore 18 February

Robert Louis Stevenson's story of murder, money and mutiny is brought to life in a thrilling new stage adaptation.

It's a dark, stormy night. The stars are out. Jim, the inn-keeper's granddaughter, opens the door to a terrifying stranger. At the old sailor's feet sits a huge sea-chest, full of secrets. Jim invites him in – and her dangerous voyage begins.

Suitable for 10yrs+.